

# FIRST E-NEWSLETTER

January 2024

Welcome to the first CIREVALC newsletter! We're excited to share our project's early activities and updates with you. In this edition, you'll find information about our project aims and an introduction of our team.

The main project goal is to introduce and upscale circular economy models in regional value chains in the food, catering and packaging sectors through community building, strengthening circular economy skills of enterprises, non-business entities and local communities. CIREVALC contributes to transition to a circular economy by increasing knowledge, designing and testing a novel solution of the CIREVALC Circular Community Accelerator and improving policy learning.



Please follow us on our platforms to stay updated on all CIREVALC activities. We hope you enjoy learning more about our project!

Key figures:	€ 2.314.092	Project budget in EUR
Budget:	€ 1.851.274	ERDF funding in EUR

This project is supported by the Interreg CENTRAL EUROPE Programme 2021-2027 with cofinancing from the European Regional Development Fund (ERDF) - the project's total budget is 2,314,092 EUR, of which the ERDF funding amounts to 1,851,274 EUR.

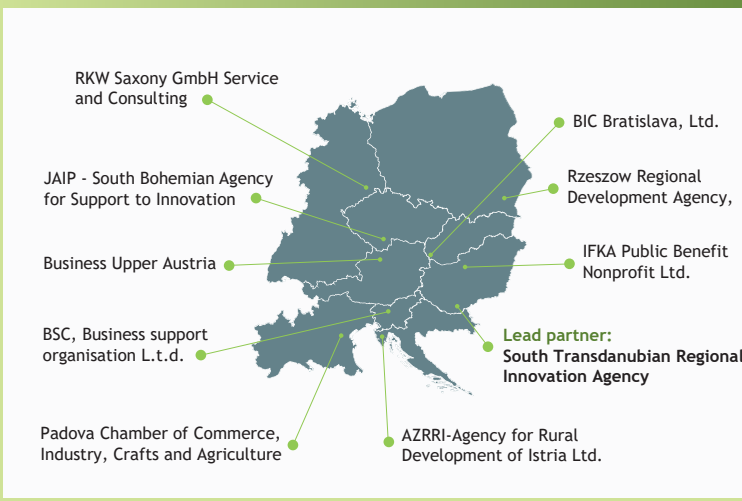
## Partnership:

10 partners / 10 regions

9 countries

The CIREVALC project partners are actively promoting circular economy solutions across sectors (food, catering, packaging).

The partnership covers all regions under the Interreg CE Programme, offering insights into business models, technologies, regulations, and support mechanisms. Our team comprises national (IFKA) and regional (BSC, RARR S.A., AZRRI, BIZ UP) development agencies. These agencies not only liaise with policymakers, but also work directly with SMEs, local institutes and communities. They can influence policy changes and introduce support mechanisms based on project findings.



Regional innovation agencies (STRIA and JAIP) bring innovative methods and models to the project. Padova Chamber of Commerce understands businesses deeply, while our private partners (RKW and BIC) offer expertise as innovation hubs.

Associated partners such as KOVET, Blue Earth, the Ministry of Innovation and Technology, iFood, and KOVET, expanding our knowledge base and potential host locations for the CIREVALC Circular Community Accelerator.

### South Transdanubian Regional Innovation Agency



#### Why do we join CIREVALC?

STRIA would like to promote and enhance the application of circular economy models in the South-Transdanubian Region in Hungary building on the experience of CIREVALC project partners.

### IFKA - IFKA Public Benefit Nonprofit Ltd.



#### Why do we join CIREVALC?

There is a huge potential in introducing and upscaling circular economy support models and business models in regional value chains in the food, catering and packaging sectors. IFKA carries out a micro-level analysis with the aim of providing a sectoral mapping.

### BSC, Business support centre L.t.d., Kranj



#### Why do we join CIREVALC?

BSC Kranj would like to foster circularity in Gorenjska's communities, in food, packaging and catering sector, enhance circularity in local value chains building on the experience of CIREVALC project partners.

### Rzeszow Regional Development Agency



#### Why do we join CIREVALC?

By participating in the project, RARR would like to help regional food, catering and packaging producers in the Podkarpackie region to jointly develop innovative solutions for the sector. Additionally RARR would like to spread awareness of circular economy models in the Podkarpackie region in order to improve and develop the agri-food, catering and packaging sectors by involving local pioneers of sustainable of circular economy solutions for individual needs of sector in our region.

### Padova Chamber of Commerce Industry Crafts and Agriculture



#### Why do we join CIREVALC?

Padova Chamber of Commerce carries on many projects aiming at supporting companies, particularly SMEs, in the fields of capacity building, innovation, shift towards a greener economy.

Padova Chamber of Commerce aims at involving SMEs and regional/local stakeholders in the food value chain to implement innovative solutions reducing their waste and promoting a circular approach.

### JAIP - Jihočeská agentura pro podporu inovací, o.p.s.



#### Why do we join CIREVALC?

Contribution to public awareness of the meaning and strategic benefits of the circular economy models in regional value chains in the food, catering and packaging sectors in the South Bohemian region is an essential activity of the project. Our region needs higher education of the public in the task of circularity and the project pioneers could help with it together with searching sustainable solutions to regional challenges.

### Agency for rural development of Istria Ltd.



#### Why do we join CIREVALC?

AZRRI's idea is to spread the awareness of circular economy models in Istria Region with the aim of improving and developing agro-food, catering and packaging sector by involving local pioneers.

### RKW Sachsen GmbH Dienstleistung und Beratung



#### Why do we join CIREVALC?

To provide efficient support to SMEs in food, catering and packaging sectors to apply circularity technologies and related new business models to contribute to inter-regional networks in the sectors and to learn and benefit from them.

To provide results and insights of the Cleantech Initiative to other regions and sectors To strengthen inter-regional innovations and collaborations in food, catering and packaging sectors.

To set impulses for the development of the regional food cluster.

To work with international partners and friends and to improving our network in CE.

### Business Upper Austria - OÖ Wirtschaftsagentur GmbH



#### Why do we join CIREVALC?

To help regional actors of the food, catering and packaging sector in Upper Austria to jointly develop innovative sustainable circular economy solutions for the individual needs in the region. Furthermore, we would like to improve the cross-sectoral cooperation of all three value chains as well as the communication between private and public organisations, policy makers and the general public.

### B I C Bratislava, spol. s r.o.



#### Why do we join CIREVALC?

BIC has become a one of the leading expert organisations for SMEs support, innovation, internationalisation, businesses and regional development in Slovakia. BIC is actively cooperating with public and private stakeholders and with technology-based companies in Slovakia and in the EU. Main activities of BIC are focused on development of innovative businesses. BIC is a representative of the "business support and analytical service part" of the consortium.

## Project Consortium Meeting December 12-13, 2023

CIREVALC's partners gathered in Bratislava on December 12-13. The meeting provided an opportunity to reflect on the first project phase and strategize for the upcoming crucial activities. They shared experiences related to micro-level analysis and surveying, presented results from the regional working papers, and engaged in lively joint discussions. They joined together to share local success stories and explored cross-regional insights, a regional review paper, and regional action planning. Additionally, discussions took place concerning a thematically linked Central project, study visit preparation, mapping tools, and effective communication strategies.



Stay informed by following CIREVALC Interreg CE social media.

## KICK START May 8-10, 2023



Hosted by RKW Sachsen, the CIREVALC kick-off began with a warm welcome from Dirk Vogel. Partners introduced themselves creatively via posters, setting the stage for a deep dive into the 36-month programme plan. Angelika van Es clarified the Interreg Central Programme rules, ensuring everyone was on the same page. The lead partner outlined the project's goals and plans, with focused discussions on each Work Package.

In short, the CIREVALC kick-off in Dresden was collaborative and informative start. With clear objectives and discussions, the project is off to a promising beginning, paving the way for sustainable advancements ahead.

## Local Working Groups

In every region, we establish Local Working Groups (LWGs) comprising project collaborators, local pioneers and other pivotal stakeholders from regional ecosystems, including Business Support Organizations (BSOs), municipalities, regional authorities, knowledge partners, and NGOs. These LWGs play a crucial role in shaping project activities, sharing best practices, highlighting challenges, and offering invaluable feedback on project outcomes.

